

# G'day Goomalling



Jurokine Coach House | Jennacubbine

“You can, you should, and if you’re brave enough to start, you will”

- Stephen King

## Contents

Shire President’s Greetings .....	2
Rates and debtors.....	2
Reporting issues to relevant departments.....	3
Community Pantry.....	3
Anstey Park Revitalisation .....	5
War Memorial Hall – Temporary Closure.....	5
Goomalling Community Opshop .....	6
Community Mural X Melski .....	7
Upcoming Driving Test Dates .....	8
Local Government Elections.....	8
Building & Planning .....	8
The V – Goomalling Recreation Ground.....	8
Aboriginal Cultural Heritage Act 2021 (Western Australia).....	11
NAIDOC Week Event.....	11
The Voice to Parliament .....	11
Dates for your diary.....	12

## Upcoming Council Meetings

- Wednesday 19 July
- Wednesday 16 August

Everyone is welcome to public question time which is from **4.30pm to 4.45pm**, at the start of the Meeting.

Written submissions are to be received by the second Wednesday of the month, with late correspondence accepted up to two days before the meeting.

Agendas and Minutes are published on Council’s website:

<https://www.goomalling.wa.gov.au/your-council/council-meetings.aspx>

## FREE Tech-Help at the CRC

Do you need a hand with...

- Setting up your card on your phone?
- Moving music from your computer to your phone?
- Setting up and email account?
- Creating a Facebook profile?
- Or something else tech?

Available Mondays, fortnightly

To book call 08 9629 1570 by Friday the week before

Location: Goomalling Community Resource Centre  
51-53 Railway Terrace, Goomalling

Sponsored by [fobacom.com](http://fobacom.com)

## Shire President's Greetings

We are approaching the end of another financial year. Council presented its 2021-22 Audited Annual Report to Electors at the AGM on 29 May 2023. Thank you to those that attended and provided feedback to Council on various issues.

Local Road and Community Infrastructure Program (LRCIP) round 3 projects have progressed with the following projects completed: refurbishment of Gumnuts Early Learning Centre toilet and laundry, purchase of mobile traffic lights, sewerage works and a new footpath on High Street. Still to come from Round 3 is town hall ceiling replacement, old road board building upgrade, museum re-roof, Anstey Park and swimming pool upgrades.

The CRC and Shire collaboration for the community mural x Melski was a great initiative that saw 65 members of the community participate and resulted in a beautiful, vibrant mural. Thank you to the CRC for funding the project.

Anstey Park concept design has been delivered by Nature Playgrounds and we're excited to see the idea and input from community members come to life on paper. We are also happy to confirm that Midland Brick (who has a clay pit in the Shire of Goomalling) will be partnering on the project to provide materials for project delivery. We are looking forward to the project progressing.

Four of our Councillor's terms expire in October 2023, so if you've ever thought about how you can contribute to your community why not **become a Councillor**.

**Cr Barry Haywood**  
**Shire President**



## Rates and debtors

### Are you having trouble paying your accounts or rates?

The Shire of Goomalling is committed to working with debtors and ratepayers to find an appropriate payment solution that works for both parties. Council understands that it can be difficult to ask for support, and will treat you with sensitivity, respect and confidentiality.

**If you are experiencing difficulty paying your accounts or rates, please contact our Finance Officer Trudi Manera so we can help you make alternative arrangements and avoid interest, late payment fees and any further distress.**

### Pensioner rebate

Concession holders/Pensioners are required to pay their portion of the 2022/23 rates by 30 June 2023 in order to receive the rebate for 2022/23. Please

remember to provide us with a copy of your **new** card when you receive it.

We review concession eligibility annually to ensure you are receiving the correct rebates. If you think you may be eligible for a concession or rebate, please contact Finance Officer Trudi Manera on 08 9629 1101.

### Ratepayers & debtors

Please ensure you use the appropriate reference on internet banking transfers to ensure your payment is allocated correctly. This is either the **Debtor Code** or **Rates Assessment Number**, both are located on the top right hand corner of the invoices/notices.

## Lodging an objection with Landgate

Rating valuations are determined by Landgate, as such you have the right to object to a valuation and request a reassessment.

The online objection form is now available on Landgate's webpage [Lodging an Objection](#), under Q&A "How do I lodge an objection on my GRV, UV or pastoral rent value".

## Reporting issues to relevant departments

### Road Damage

When reporting damage to state roads, please contact Main Roads WA directly to reduce wasted shire resources redirecting fault enquiries instead of managing the local infrastructure damage.

State Roads in the Shire of Goomalling include:

- Northam-Pithara Road (between Goomalling-Northam and Goomalling-Wongan Hills)
- Goomalling-Toodyay Road
- Goomalling-Merredin Road (aka Goomalling-Dowerin or Goomalling-Wyalkatchem Road)

The direct line for reporting damage is:

**Main Roads WA Faults 138 138**

### Water leaks


Call Water Corporation 13 13 75

The online form is expected to deliver significant efficiencies by enabling customers to lodge their objection and supporting evidence for up to 10 properties via a single submission.

While Landgate encourages the use of the online form, objection submissions will continue to be accepted via email, post and at Landgate's Customer Service counter.

### Faulty Street light

Reporting a faulty street light online directly to Western Power is quick and easy. <https://www.westernpower.com.au/faults-outages/report-a-faulty-streetlight/> Streetlight faults are normally fixed within 9 working days in rural areas and WP will let you know when it has been rectified.

 For electrical hazards and emergencies such as pole damage or exposed wires, call **13 13 51**.

### Fire

If you see a fire, don't ring the Shire.

**Be a hero, call triple Zero**



It may be useful to save these phone numbers in your contacts so you have them readily available when the need arises.

## Community Pantry

The St Vincent de Paul (Vinnies) Community Pantry provides assistance to families and individuals who have difficulty meeting their basic needs.

The Pantry is open every third Thursday of the month from 10am to 12pm at the Uniting Church Parish, 17 Quinlan St.

## Volunteers needed to run the pantry

If you are willing to help out for a couple hours a month or just every now and then, please contact Tahnee via [cdo@goomalling.wa.gov.au](mailto:cdo@goomalling.wa.gov.au) or call 9629 1101.



## Anstey Park Revitalisation

### PROJECT UPDATE

Nature Playgrounds has finalised the concept design based on community surveys and feedback from the community focus group input.

The park encompasses play elements suitable for children aged 1-12 years with room for imaginative play within the nature play landscape.

The project is funded by the LRCIP Federal stimulus in addition to community partners including Goomalling & Districts **Community Bank**<sup>®</sup> and Midland Brick. No financial contributions from Council own source funding has been included in this project.

Council has had some feedback regarding the exclusion of youth elements from the park. There are a few reasons for that:

1. Majority of survey respondents were opposed to youth elements being included
2. Majority of survey respondents believe a separate youth space was more appropriate
3. Less than 30% wanted a basketball court included
4. Due to the close proximity to residences concerns were raised about the suitability and noise (after hours) if we encourage young people to congregate in the space
5. A separate youth space for children 13+ is in the pipeline (pending road closure)

These factors led the focus group and Council to make the space with the ages 12 and under the primary beneficiaries.

Addressing the commentary on Facebook in regard to the location, there were a few comments about the current park and why Council isn't investing in improvement to the existing space. Refer to below for further detail

1. 2018 Council engaged AECOM to carry out community consultation on its behalf in regards to the recreation ground (including the existing playground) to develop a master plan for any

future developments including asset replacement. From the public meetings and community survey responses AECOM determined that the community didn't like the location of current playground (and it is approaching end of life) so provision for upgrade and relocation of the park to the other side of the property, closer to the community centre building is included in the master plan.

2. The current playground is in disrepair and would likely fail playground audits
3. Anstey Park was an unused space with a derelict building that needed to be demolished, due to the zoning, a park seemed to be the most appropriate use of the civic space with the neighbouring block owned by council earmarked for a popup market/event space.
4. The park being located on Railway Terrace is the ideal location to encourage travelling families to stop on their way through, hopefully resulting in an injection of funds to local businesses. Railway Terrace is the main business area which includes multiple cafes, retail shops and food stores.

### War Memorial Hall – Temporary Closure

Goomalling War Memorial Town Hall is temporarily closed **until further notice** while remedial works are completed including

- upgrade the power to meet current Australian Standards
- Upgrade lighting to LED
- Full ceiling replacement main hall
- Stage ceiling replacement

The town hall is our most well used facility with dance, karate, pilates and daycare all permanent users of the space.

The remedial works are 100% funded by the federal government stimulus, Local Roads & Community Infrastructure Program (LRCIP).

Due to safety concerns the hall will be closed until works are completed.

### Goomalling Community Opshop

The Shire of Goomalling is now an approved organisation with Services Australia, which means hours worked at the Goomalling Community Opshop are now eligible for reporting to Centrelink.

#### Round 3 - Activate Goomalling Grant Program

##### Grant Recipients

- Goomalling Toy Library \$1712 (new toys)
- Goomalling Primary P & C \$900 (reading books)
- Goomalling Aboriginal Corporation \$600 (NAIDOC)
- Goomalling Gumnuts \$1000 (soft fall replacement)

The Opshop also funded the catering for ANZAC Day 2023, outside of the grant round.

### Terracycle x Opshop

The opshop has been working with Terracycle for some time, recycling things that aren't accepted in kerbside recycling bins. You name it, they recycle it.

We have just got a fresh new batch of collection boxes so you can drop of the following waste streams:

- Medication blister packs @ **Goomalling Pharmacy**
- Toys, beauty products, media storage and pencils, textas and pens @ **Goomalling Shire or Goomalling Opshop**

<https://www.facebook.com/goomalling.op.shop/>

# OUR COMMUNITY INVESTMENT

**★ 55 ★**  
THOUSAND

DONATED BACK TO THE COMMUNITY SINCE 2006

We've been investing in local projects since 2006. We currently offer grants twice yearly with \$8000 contributed annually. So far in 2023 we've donated \$4,212.65.

#### Our Top 3 investment categories

- Education // \$14,036**  
26% This includes Gumnuts Early Learning Education Centre, Goomalling Primary, Sacred Heart Catholic School, playgroup and the library for various resources, events and equipment.
- Community // \$13,550**  
25% This included investment in the community garden, mens shed and community facilities.
- Health // \$13,320**  
24% This includes equipment and maintenance for both the hospital and medical surgery.

#### Other categories of investment

<b>Youth</b> \$3,500	<b>Heritage</b> \$3127.91	<b>Sport</b> \$2813.50	<b>Seniors</b> \$1050	<b>Environment</b> \$1020	<b>Events</b> \$1000	<b>Ballardong</b> \$1390

## Community Mural X Melski

More than 65 community members and even some travelers turned out on Saturday 27 May for a glorious day of chatting and painting. Mel McVee @melskiart and Tash assisted community members to create a master piece on the wall of the Whisper on the Terrace building.

The artwork depicts the two unofficial animal emblems of Goomalling including a Koomal, brush tail possum and the Smoker Parrot, which you may have seen on the Konnongorring district plates.

The collaborative project was coordinated by the Shire of Goomalling and funded by Goomalling Community Resource Centre. Thank you to everyone that came and participated, the Goomalling CRC for donating the funds for the project and providing a delicious sausage sizzle, and to Central Ag for providing the bbq.



## Upcoming Driving Test Dates

- 22 June
- 20 July
- 17 August

Priority booking are available to residents of Goomalling and surrounding towns.

To book in for a Practical Driving Assessment please contact one of our licensing officers on (08) 9629 1101.

You will need to have a test entitlement, your Driver's Licence or Learner's Permit number ready when booking your appointment.

## Local Government Elections

Voting in local government elections is not compulsory in Western Australia. However, we strongly encourage local electors to vote.

Council elections are held every two years and 2023 is an election year.

This year Goomalling Council will have four vacancies with Cr Haywood, Cr Van Gelderen, Cr Butt and Cr Wilkes terms expiring.

Nomination for Council will open Thursday 31 August and close Thursday 7 September 2023. Election Day is scheduled for Saturday 21 October 2023.

Council elections will look a little different this year, as Council resolved to engage the WA Electoral Commission to carry out the election on its behalf which means the election will be completed via postal voting and counted by WAEC.

If you are interested in becoming a Councillor review the Department of Local Government Sport & Culture information for candidates.

[Be a vocal local: stand for council | DLGSC](#)

## Building & Planning

### Unauthorised work

Work is considered unauthorised if:

1. You have NOT received appropriate planning approval from Council for the building work (if applicable)
2. If you haven't received a building permit for the work
3. If your building permit has expired (they expire after two years, extensions are available)

If you are considering building contact Council to see what is required, the following items are often overlooked:

- Rural lots always require planning
- Sea containers require planning and are only allowed onsite for two years

Things that require building permits that you might not have considered:

- Water tanks greater than 5000L capacity
- Patios and sheds above 10m<sup>2</sup>
- Dome shelters
- Retaining walls higher than 50cm

Unauthorised works can attract significant fines and retrospective applications have higher fees.

## The V – Goomalling Recreation Ground

Mortlock Sports Council had permission from Council for temporary erection of a "V" for the Mortlock Winter Sports Finals in 2022.

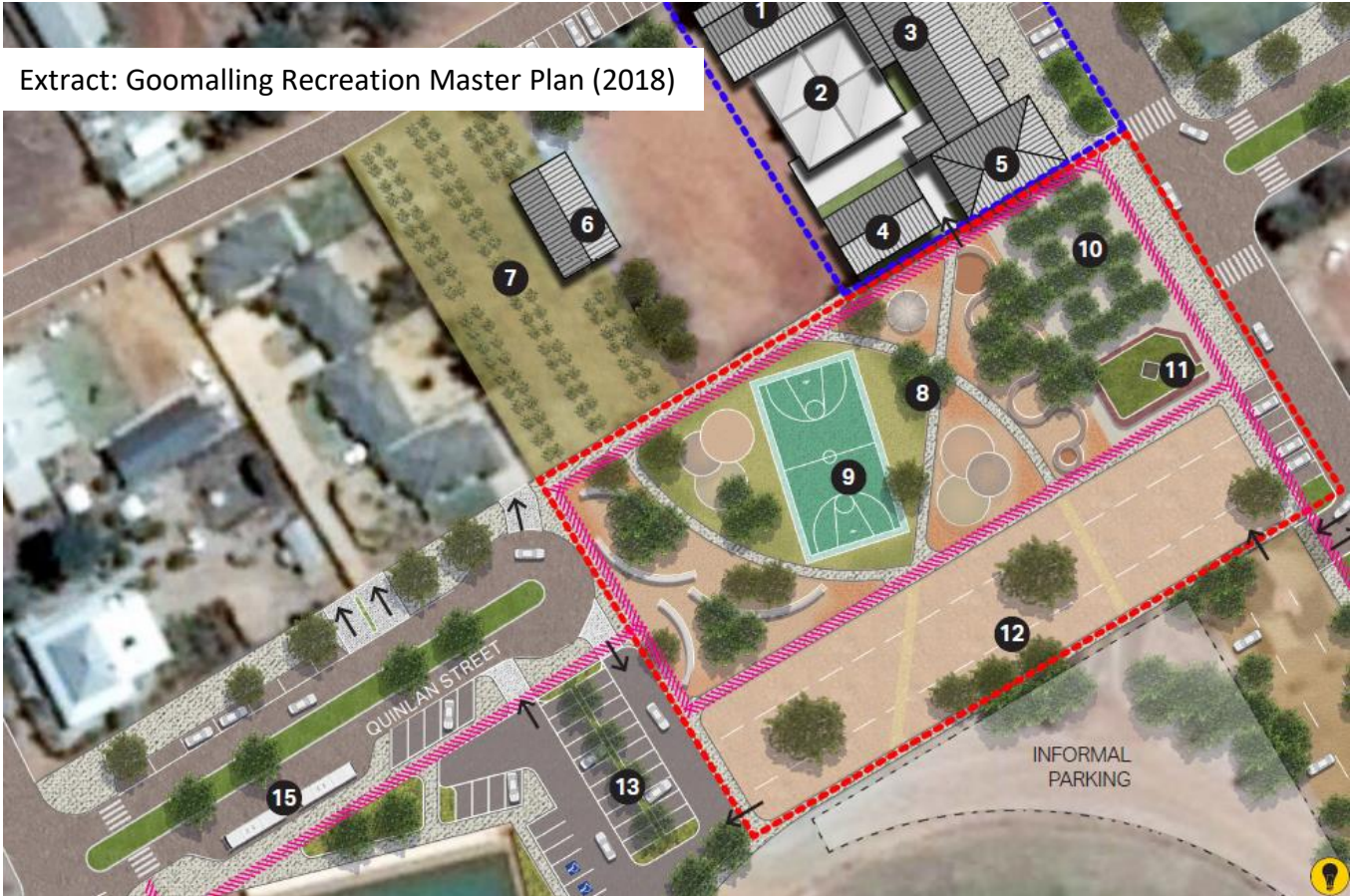
The V was removed after the finals pending application to Council for planning and building details, including appropriate engineering to ensure that the V is secured adequately as it is accessible to the public and a potential risk to Council.

The V will be reinstated once adequate planning is received and approved.



## PROPOSED DEVELOPMENT GOOMALLING GREATER RECREATION GROUND – **PERMANENT PARTIAL CLOSURE OF QUINLAN STREET BETWEEN HODDY & LOCKYER STREETS (CUL-DE-SAC ACCESS)**

Extract: Goomalling Recreation Master Plan (2018)



### Background

At the December 2015 Ordinary Council Meeting, it was proposed and accepted in principal, to extend the recreation ground at the Northern end and reduce the Quinlan Street road reserve to the South to accommodate extra parking and create a unified recreation precinct encompassing the sports facilities, town hall, community garden, youth precinct (new), and Gumnuts Early Learning Centre.

A recreation master plan was created by contracted consultancy firm AECOM, taking into consideration current and future needs of our community following a comprehensive consultative process including multiple community meeting and community surveys. The design was presented to the community and finalised in 2018, with the intention of slowly developing the precinct as resources become available.

The proposed land annexation will require partial closure of Quinlan Street between Hoddy and Lockyer Streets and cul-de-sac access to properties at the south western end between Lockyer Street and Lot 77 Quinlan Street.

### How does this fit with the Shire of Goomalling Strategic Plan

The closure was identified in the Recreation Master Plan to accommodate the development of a youth precinct. The project aligns with the following Council Strategic Outcomes:

**SOCIAL – S3** Provide Active and passive recreation facilities and services

**S3.2** Develop, maintain and support appropriate recreation facilities throughout the Shire of Goomalling (ongoing)

## Environmental Impact

No negative impact identified

Community comment will be invited following a development plan including re-vegetation of the site, creating a greater green space and enhancing the environment.

## Economic & Social Benefit

More aesthetically pleasing improving our town's liveability.

Increased safety with consideration to relocate playground, lighting, disability access, allocated parking and less traffic traversing Quinlan Street due to the road reserve reduction. Quinlan Street Hoddy St Intersection has had multiple near misses and one accident since the plan was developed, the road closure would mitigate this risk.

Provide a space for young people to socialise and participate in physical activity without the formal setting of structured sport. Reduction in loitering due to current lack of access to appropriate youth facilities

Makes the town more appealing for prospective families (new)

## Financial Implications

The project is embryonic and therefore preliminary costing hasn't been identified, Council will investigate grant opportunities and partnerships to reduce costs.

The master plan is a concept plan only, once Council has approved the road closure engineers and

appropriate contractors will be engaged to complete detailed (engineered) designs and project costings.

Community consultation and input will take place with the detail design including engaging local youth to determine elements for the youth space.

Once the detailed design is complete Council staff develop the project plan, cost benefit analysis and relevant support plans and funding applications, with the following grants earmarked for the project:

1. Lotterywest
2. Growing Regions Program (\$500,000 to 15million)
3. Department of Transport (for new footpaths)

## Governance

Department of Planning, Lands and Heritage (DPLH) is the regulatory body that will assess Council's application and facilitate the expansion of the recreation reserve and reduction of the road reserve.

Council is seeking comment in regards to the proposed road closure of Quinlan Street prior to taking further action. All comments are to be submitted by Friday 30<sup>th</sup> June, 4.30pm and addressed to:

Peter Bentley  
Chief Executive Officer  
PO Box 118  
GOOMALLING WA 6460

OR  
[goshire@goomalling.wa.gov.au](mailto:goshire@goomalling.wa.gov.au)

If you would like more information don't hesitate to contact me.

**PETER BENTLEY**  
**CHIEF EXECUTIVE OFFICER**

## Aboriginal Cultural Heritage Act 2021 (Western Australia)

The *Aboriginal Cultural Heritage Act 2021* (ACH Act) provides a modern framework for the recognition, protection, conservation and preservation of Aboriginal cultural heritage while recognising the fundamental importance of Aboriginal cultural heritage to Aboriginal people.

Here are a few useful links that will assist land owners and users:

Search engine for Aboriginal sites or heritage places – it should be noted that the entire Mortlock River North & Avon River are identified heritage sites. [Department of Planning, Lands and Heritage \(dplh.wa.gov.au\)](http://dplh.wa.gov.au)

Land use - Activity Tiers

[Aboriginal Cultural Heritage Management Code \(www.wa.gov.au\)](http://www.wa.gov.au)

Proponent (Land user) with proposed activity – Stages 1-3

[User journey proponent with a proposed activity stage 1,2 and 3 \(www.wa.gov.au\)](http://www.wa.gov.au)

Fact sheets and more information

[Aboriginal Cultural Heritage Act 2021 \(www.wa.gov.au\)](http://www.wa.gov.au)

## NAIDOC Week Event

Goomalling Aboriginal Corporation is hosting a NAIDOC Community Event:

**7 July, 10am-1pm**  
**Goomalling Reserve Site**  
Calingiri Goomalling Road

Damper making | Roo lasagne | sausage sizzle

FREE Community Event – All welcome

## The Voice to Parliament

In late 2023, Australians will have their say in a referendum about whether to change the Constitution to recognise the First Peoples of Australia by establishing an Aboriginal and Torres Strait Islander Voice.

The Voice would be an independent and permanent advisory body. It would give advice to the Australian Parliament and Government on matters that affect the lives of Aboriginal and Torres Strait Islander peoples.

Aboriginal and Torres Strait Islander people have called for members of the Voice to be chosen by First Nations peoples based on the wishes of local communities.

What would the Aboriginal & Torres Strait Islander voice do?

- Give independent advice to Parliament and Government
- Be accountable and transparent
- Work alongside existing organisation and traditional structures

How will the Aboriginal & Torres Strait Islander voice be set-up?

- Will be chosen by Aboriginal & Torres Strait Islander people based on the wishes of local communities
- Will be representative of Aboriginal & Torres Strait Islander communities, gender balanced and include youth
- Will be empowering, community led, inclusive, respectful and culturally informed.

Here are some resources from the Australian Government and Reconciliation Australia about the Aboriginal & Torres Strait Islander Voice to Parliament:

[The Voice](#)  
[Voice to Parliament - Reconciliation Australia](#)  
[The Voice Design Principles - Uluru Statement from the Heart](#)

## Dates for your diary

<b>1 June</b>	Makuru Season commences (Nyoongar Calendar)
<b>19 April</b>	Council Meeting, 4.30pm, Council Chambers
<b>15 June</b>	Australian Government Mobile Service Centre, 9.30am-3.00pm near Railway Station Café <a href="http://www.servicessaustralia.gov.au/mobileoffice">www.servicessaustralia.gov.au/mobileoffice</a>
<b>15 June</b>	Vinnies Community Pantry, Uniting Church, 17 Quinlan Street, 10am-12pm
<b>21 June</b>	Council Meeting, 4.30pm, Council Chambers
<b>7 July</b>	NAIDOC Week, Goomalling Reserve Site (page 11)
<b>19 July</b>	Council Meeting, 4.30pm, Council Chambers
<b>20 July</b>	Vinnies Community Pantry, Uniting Church, 17 Quinlan Street, 10am-12pm
<b>1 August</b>	Djilba Season Commences (Nyoongar Calendar)
<b>16 August</b>	Council Meeting, 4.30pm, Council Chambers
<b>17 August</b>	Vinnies Community Pantry, Uniting Church, 17 Quinlan Street, 10am-12pm



32 Quinlan St | PO Box 118  
Goomalling WA 6460  
T: 9629 1101 F: 9629 1017  
E: [goshire@goomalling.wa.gov.au](mailto:goshire@goomalling.wa.gov.au)  
[www.goomalling.wa.gov.au](http://www.goomalling.wa.gov.au) | [www.visitgoomalling.com.au](http://www.visitgoomalling.com.au)

Open Monday-Friday 8.30am-4.00pm  
[Facebook.com/GoomallingShire](https://www.facebook.com/GoomallingShire)