

# G'day Goomalling



**LOCAL INFORMATION BOOKLET**

**WELCOME PACK**  
Everything you need to know  
about living in Goomalling

## **NYOONGAR ACKNOWLEDGEMENT**

We acknowledge that we meet, work and play on the land of the Nyoongar people of Ballardong Boodjar, Koomal Boodjar. We pay respect to their Elders, past, present and emerging; and acknowledge their enduring connection to the land, waters and sky.

## **DISCLAIMER**

The Shire of Goomalling has taken necessary measures to ensure that information contained in Council's publication is true and correct at the time of publication, changes in circumstances after the time of publication may impact on the accuracy of this information. Council gives no warranty or assurance and makes no representation as to the accuracy or reliability of any information contained in this document or that it is suitable for your intended use.

## **ACKNOWLEDGEMENTS**

### *Photo credit*

Indigo Storm Photography (front cover)

Natalija Brunvos

Mary Parker

Callum Sims Photography

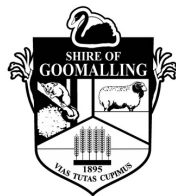
Pia Morris, Mad Love Nation

Shire of Goomalling

Jessika Ashworth Photography

### *Research (History)*

Barbara Sewell "Goomalling A Backward Glance"



Shire of Goomalling  
32 Quinlan Street  
PO Box 118  
GOOMALLING WA 6460

**P:** 08 9629 1101 | **F:** 08 9629 1017

**E:** [goshire@goomalling.wa.gov.au](mailto:goshire@goomalling.wa.gov.au)

**W:** [www.goomalling.wa.gov.au](http://www.goomalling.wa.gov.au)



# WELCOME TO #GOOMATOWN

---

## Welcome to Goomalling!

Whether it is for a short break or you have chosen to make Goomalling your home, we hope the information in this booklet serves as a tool to make your stay as comfortable and enjoyable as possible.

If you need more information our friendly staff at the Caravan Park or Administration Office will be more than willing to assist. Our website [www.goomalling.wa.gov.au](http://www.goomalling.wa.gov.au) and our Facebook page are also a great resource for local content including upcoming events and activities.

We trust you'll enjoy your time in Goomalling and look forward to seeing you around town.

Cr. Barry Haywood  
**Shire President**

*"A tapestry of colour  
stretching as far as the eye can see,  
wide horizons and starry nights.  
It's where I'd rather be."*



# YOUR COUNCIL

---

Cr Barry Haywood  
**President**

E: [cr.haywood@goomalling.wa.gov.au](mailto:cr.haywood@goomalling.wa.gov.au)

Cr Julie Chester  
**Deputy President**

E: [cr.chester@goomalling.wa.gov.au](mailto:cr.chester@goomalling.wa.gov.au)

Cr Christine Barratt

E: [cr.barratt@goomalling.wa.gov.au](mailto:cr.barratt@goomalling.wa.gov.au)

Cr Casey Butt

E: [cr.butt@goomalling.wa.gov.au](mailto:cr.butt@goomalling.wa.gov.au)

Cr Roland Van Gelderen

E: [cr.vangelderren@goomalling.wa.gov.au](mailto:cr.vangelderren@goomalling.wa.gov.au)

Cr Mark Ashton

E: [cr.ashton@goomalling.wa.gov.au](mailto:cr.ashton@goomalling.wa.gov.au)

Cr Brendon Wilkes

E: [cr.wilkes@goomalling.wa.gov.au](mailto:cr.wilkes@goomalling.wa.gov.au)

# CONTACT COUNCIL

## Enquiries

To make enquiries or to provide feedback, we encourage you to contact the Shire of Goomalling by using one of the following:

### In person:

Shire Administration Office  
32 Quinlan Street  
Goomalling WA 6460

### In writing:

**PETER BENTLEY**  
CHIEF EXECUTIVE OFFICER  
Shire of Goomalling  
PO Box 118  
Goomalling WA 6460

**P:** 08 9629 1101

**F:** 08 9629 1017

**E:** [goshire@goomalling.wa.gov.au](mailto:goshire@goomalling.wa.gov.au)

**w:** [www.goomalling.wa.gov.au](http://www.goomalling.wa.gov.au)

The Administration Office is open from **Monday to Friday** between **8.30am** and **4.00pm** (closed ALL public holidays)

## For non-life threatening Emergencies

Snakes | **Jayden Couzens 0488 278 606**

Blocked/damaged drains; Chemical and oils spill; fallen trees on roads/parks; dangerous roads and footpath conditions:

**David Long, Works Manager 0436 813 959**

Dog attacks and stock on roads:

**Irene Ryan, Ranger 0412 561 828**

## Be informed....

### Visit us online

The Shire of Goomalling has an active online presence. Why not follow us on Facebook

**Facebook.com/GoomallingShire/  
Instagram @visitgoomalling**

### Council Newsletter

Council's quarterly newsletter will keep you up to date with the latest important information, events, and happenings in the Shire of Goomalling.

Subscribe via

[goshire@goomalling.wa.gov.au](mailto:goshire@goomalling.wa.gov.au)

### SMS Notifications

Urgent and important information is sent via text to local residents including information in the case of a local emergency, harvest/movement bans, road closures etc.

Register your mobile number today by contacting the Administration Office via email or phone.

### Endeavour Newspaper

Our local newspaper distributed fortnightly by the Goomalling Community Resource Centre is available online or in hardcopy.

Sold at most local businesses



# OUR STORY

*Goomalling: the gateway to the  
Central Wheatbelt*

***"Kaya koorda, wanjoo Ballardong  
boodjar, Koomal boodjar"***

*"Hello friend, welcome to Ballardong  
Country, welcome to possum Country"*

Goomalling was occupied by the Ballardong people, part of the thirteen Nyoongar tribes which occupied south-western Australia extending from Geraldton to Esperance.

The name Goomalling is derived from the Aboriginal word "Koomal", the name of a local species of possum. The common Brush Tail Possum was once abundant in the Goomalling district but is rarely seen today.

Goomalling is a district in the central Wheatbelt known for its reliable rainfall, thriving agriculture and rich biodiversity.

The settlement of convicts in the colony in 1850 saw increased demand for land settlement eastward from Toodyay. The existing large leasehold of few people evolved into smaller farms from twenty-five acres to three hundred acres.

Modern farming has progressed from labour intensive small holdings to large broadacre productions with advanced machinery and technological systems that maximise efficiency.

The district has seen drops in population during the late 1900's as a result of decreased demand for labour and the reemergence of large holdings by few people.

Sport is a large part of our identity, particularly in the winter season. Locals will be travelling the region competing against opposing towns for the "holy grail". There are some intense rivalries that make it interesting for spectators and a great social atmosphere.

Our strong community framework enables the hive of activity that happens behind the seemingly quiet rural town. If you're brave enough, engage with the locals and find out the local happenings.



## TOWN Finder

- 1 CBH Domes
- 2 Old Native Reserve Site
- 3 Railway Station / Veterans Park
- 4 Anstey Park
- 5 Fire Station
- 6 Police Station
- 7 Town Hall
- 8 Playground
- 9 Goomalling Sport & Community Centre
- 10 Football / Cricket Oval
- 11 Hockey Field
- 12 Tennis / Netball Courts
- 13 Light Industrial Area
- 14 Caravan Park / Motel Units
- 15 Go-Karts Track
- 16 Swimming Pool
- 17 School Museum
- 18 Gymnasium
- 19 Bowling Green
- 20 Golf Course
- 21 BMX Pump Park
- 22 Pony Club
- Shopping/Entertainment Precinct
- Shire Office

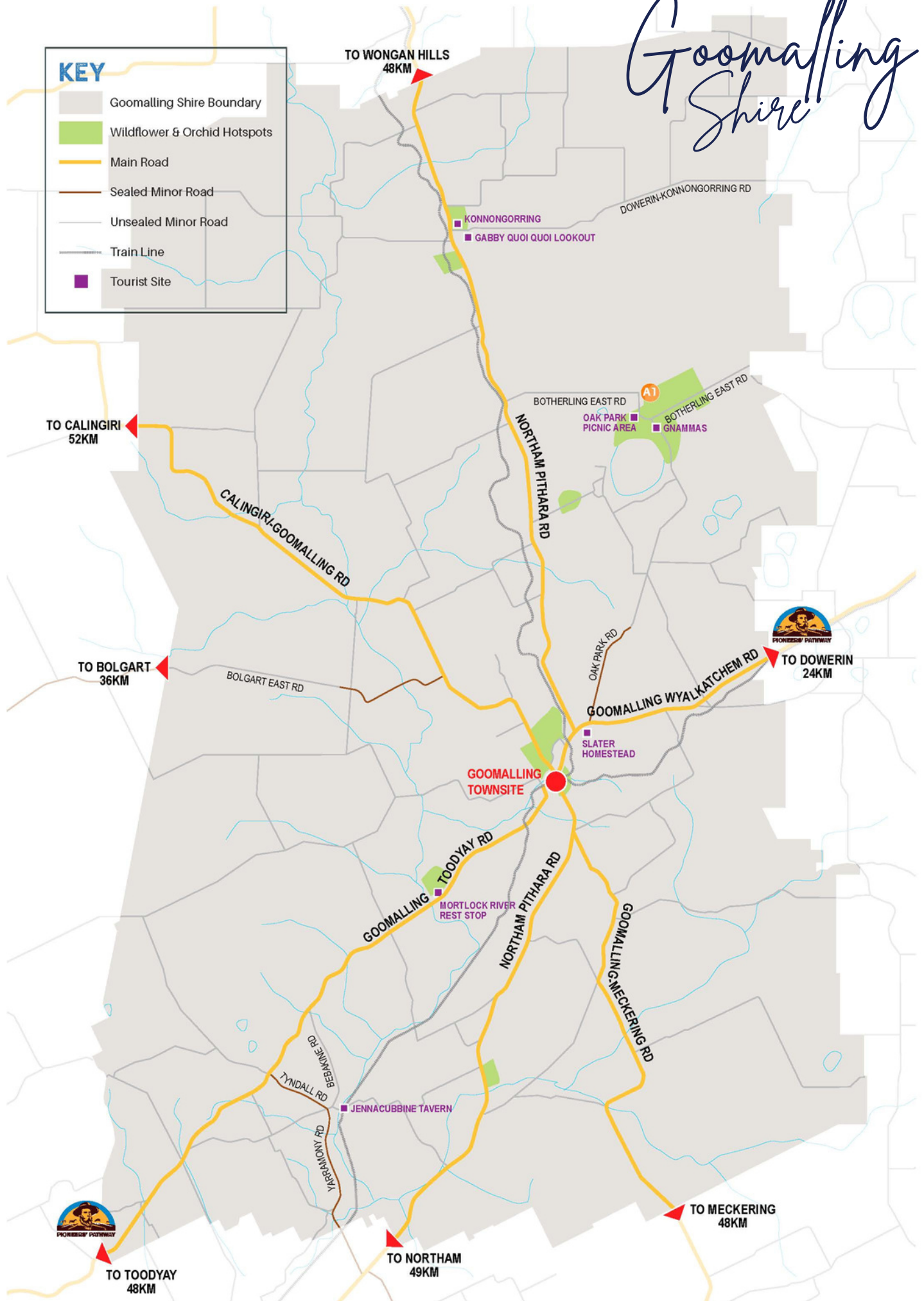
## ART Trail

- 1 Crystal Serpent Sculpture
- 2 Wander Wall Community Project
- 3 Goomalling Primary Mosaic Mural
- 4 Farmshed Mural
- 5 Colin Eaton Lions Mural
- 6 Arcadia Farm Art Possum Sculpture and other rustic metal Sculptures along the railway line
- 7 Museum School Room Mural

# Goomalling Shire

**KEY**

- Goomalling Shire Boundary
- Wildflower & Orchid Hotspots
- Main Road
- Sealed Minor Road
- Unsealed Minor Road
- Train Line
- Tourist Site





## Konnongorring

"The district of Konnongorring derives its name from "konno", an Aboriginal term for a dark coloured bulbous root about the size of a potato" - *Barbara Sewell*

Situated twenty-five kilometres north of Goomalling and known to locals as the place of smoker parrots, Konnongorring was gazetted in 1897.



The small locality boasts rich biodiversity in the bushland surrounds, with Gabby Quoi Quoi Lookout and various walk trails near the recreation reserve and town hall.

Community events are held at the recreation ground and town hall precincts. Keep an eye out in Council's quarterly newsletter, Facebook and the Endeavour for local happenings.



## Jennacubbine

Jenna, as known by locals, is still a thriving little community with active Go Karts, CWA, St Isidore's Catholic Church and of course the pub.

Jennacubbine Tavern also known as the "end of the road steakhouse", is the "local" that has been serving beer since 1902 and boasts delicious meals that are cooked in front of you.

The hall is available to hire for functions and camping and is a hive of activity for community events.

Keep informed with local happenings through Jenna Progress Association, the pub or Council publications.



# LIFESTYLE & COMMUNITY

The rural lifestyle is something to be desired; relaxed, connected and thriving. Your calendar can be jammed packed or empty. You can simply enjoy the wide horizons and peaceful landscapes.

We have a range of unstructured facilities, formal and casual groups with a variety of interests, as well as facilities available for personal hire, and community events.

Sport is one of the best ways to get involved in the community and meet the locals, we pride ourselves on our enduring success and quality facilities.



## Community events

- Australia Day Breakfast - 26 January
- Back to Goomalling - February
- International Women's Day - March
- Youth Event - April
- ANZAC Day - 25 April  
Dawn Service 5.40am  
Morning Service 10.40am
- Mother's Day Markets
- Reconciliation Week - May
- NAIDOC Week - July
- Mortlock Winter Sports Finals-  
September
- Goomalling Harvest Festival - October
- Remembrance Day - 11 November  
Veterans Park 10.45am
- Community Christmas Tree - December

and plenty more .....





## Facilities for Hire

### Goomalling Sport & Community Centre

Cnr Quinlan & Hoddy Street, Goomalling

Capacity: 278

258 standing OR 110 seated

Meeting room capacity 20

### Goomalling Town Hall

34 Quinlan Street, Goomalling

Capacity: 425

Function room 317 standing, 194 seated

Stage 108, seated 63

### Goomalling Tennis Complex

Cnr Quinlan & Hoddy Street

Capacity: 84 standing, 42 seated

6 Courts - FREE to Hire (with no lights),  
Minimal fee for light usage.

### Railway Station (currently unavailable)

Railway Terrace, Goomalling

Capacity: 100 standing, 60 seated

### Konnongorring Town Hall

Northam-Pithara Road, Konnongorring

Capacity: 214

Function room 131 standing

Stage 34 Standing

Lesser Hall 49 standing

### Jennacubbine Town Hall

7 Collins Street, Jennacubbine

Capacity: 180 (standing)

book via Jennacubbine Tavern

### Community Centre - Meeting Room

51-53 Railway Terrace, Goomalling

Capacity: 60 standing, 30 seated

### Community Buses

32 Quinlan Street, Goomalling

Licence (minimum): LR

	<b>GO 033</b>	<b>GO Shire 1</b>
Capacity:	22	14



**ACTIONS  
SPEAK  
LOUDEST.**



# THE MIGHTY BLUES

---

*A town proud, with blood that runs navy blue. We're fierce on the field.*

*Sport is the lifeblood of our community and the navy and white is worn with pride from bowling green to the football field.*

*Goomalling Bowling Club  
goomallingbowlingclub@gmail.com  
A Grade & B Grade  
Mens & Ladies*

*Goomalling Cricket Club  
goomallingcc@outlook.com*

*Goomalling Football Club  
goomallingfc@hotmail.com  
A grade, B grade, juniors & Auskick*

*Goomalling Golf Club  
goomagolfclub@gmail.com  
Mens & Ladies all levels*

*Goomalling Hockey Club  
goomallinglhc@gmail.com  
Minkey, junior and Senior*

*Goomalling Netball Club  
goomanetball@gmail.com  
A grade, B grade, Junior & Net-set-go*

*Goomalling Swimming Club  
goomallingswimclub@gmail.com  
juniors only*



# COMMUNITY GARDEN

**Where:** 40 Quinlan St, opposite the oval.

**When:** The garden is open to all and the **volunteers meet Monday mornings.**

The Goomalling Community Garden is a productive garden and the food grown is free to the residents of Goomalling. Please take what you can use and leave some for others.

If you would like to be involved, you can join us, or work in the garden when it suits you.

Please contact the coordinator (**Peta - 0467 895 811**).

---

Goomalling Community Garden was established 2017 with funding from Department of Local Government 's Community Garden Grant Program. The \$10,000 grant funded the permaculture design course, planning and development of the garden.

- The garden is located on Shire owned land on Quinlan St, opposite the oval and is maintained by volunteers.
- The garden demonstrates a variety of permaculture techniques suited to this environment. The aim is to produce seasonal vegetables and fruit using sustainable, chemical free practices.
- The garden is a place to garden, learn and enjoy the space. It is open so that produce can be picked as needed. This means that the food is as nutritious as possible by being eaten as soon as possible after picking.
- Please take what you can use and leave some for others.
- Please respect the garden infrastructure including reticulation. Take care when digging to prevent damage to the reticulation - without water the garden will die.
- The garden is maintained by volunteers - you can join us, or work in the garden when it suits you. Please liaise with the coordinator (Peta - 0467895811) if you would like to be involved.

#### Conditions of use:

- **volunteers must be registered with the Shire of Goomalling as volunteers**
- **Volunteers must complete an induction and any training required by Shire of Goomalling for Work Health & Safety.**

## Swimming Pool

22 Throssell, Goomalling

P: 08 9629 1242

**November to March**

**Mon, Wed-Fri**

6.30-7.30am (laps only)

1.30-6.00pm

6.00-6.30pm (laps only)

**Sat & Sun**

1.30-6.00pm



## BMX Pump Park

47 Quinlan Street, Goomalling

Open during daylight hours.

The pump park is located next to the hockey oval.

It has been designed to accommodate beginner riders to advanced riders.

## Recreation facility

47 Quinlan Street, Goomalling

All sporting facilities are available for community use free of charge including hire of the multipurpose tennis and netball courts.

*A small fee applies if lights are used.*



## Picnic areas

### Anstey Park

Railway Terrace, Goomalling



### Veterans Park

Railway Terrace, Goomalling



### Goomalling Caravan Park

28 Throssell St, Goomalling



### Gabby Quoi Quoi Lookout

Konnongorong-Dowerin Rd, Konnongorong



### Mortlock River

Goomalling-Toodyay Road, Goomalling



### Oak Park Picnic Area

Botherling East Rd, Walyormouring

Walyormouring Nature Reserve offers rich biodiversity that can be observed on the interpretive walk trail.



# AGEING IN GOOMA

*"Key to longevity: be involved and stay active mentally and physically"*

Goomalling is a comfortable community for retirement with a plethora of services and facilities to accommodate a variety of needs.

Everything you **need** is at your fingertips. The town has a hospital with an emergency room and low and medium care beds, medical surgery, dentist, psychologist, pharmacy, bank and grocery store.



Its close proximity to Perth makes it a convenient location for the family to visit or to attend your specialist appointments.

## **Transport**

Unfortunately, we have limited public transport options for people residing in Goomalling.

TransWA has a bus travelling between Perth and Geraldton via Northam (N3), which enables residents to travel to and from Perth.

The bus departs Perth Monday and Thursday and returns Tuesday and Fridays. The Bus Stop is located at Goomalling Railway Station.

For more information visit: [www.transwa.gov.au](http://www.transwa.gov.au)

## **Patients Assisted Travel Scheme (PATS)**

Funded by Royalties for Regions PATS is a travel subsidy for eligible patients to receive assistance to get to specialist appointments in Perth.

To **apply** contact Goomalling Hospital 9629 0100.





## **Aged Care**

### *Quamby Lodge*

Semi-detached from Goomalling Hospital has 4 *low care* units available.

Waiting list is available and is assessed on a *NEEDS* basis.

### *Sunshine Home*

6 *high care* units attached to Goomalling Hospital with full care from the hospital staff.

Waiting list is available and is assessed on a *NEEDS* basis

### *Home & Community Care (NDIS)*

- Domestic assistance
- transport within Goomalling
- home & garden maintenance

For more information about low and high care services, and NDIS services contact Goomalling Hospital

**08 9629 0100**

## **Housing**

### *Council owned units*

Council owns and manages 15 Independent Living units. The units have been designed to the universal aged living standard. There are options of 1, 2 and 3 bedroom units all located at the Aged Persons Precinct on Hoddy Street.

Waiting periods for Council's aged person units are typically 1 to 3 years.

## **Recreation**

Being part of a community group is a great way to get to know local people and there is an abundance of recreation options for aged people, whether you just want to socialise, make a difference or join a competitive team.

Some of the groups include:

- bowls
- tennis
- 24-hour gym
- Twilight Club
- GOSAR
- Men's Shed
- Golf
- Historical Society
- community garden

To see the full range of community groups visit:

**[www.goomalling.wa.gov.au/community-groups-directory.aspx](http://www.goomalling.wa.gov.au/community-groups-directory.aspx)**

## **Volunteer opportunities**

Volunteering is essential in rural communities to ensure the sustainability and continuity of community groups, as well as some of our essential services.

These organisations are always looking for volunteers:

- St John Ambulance
- Goomalling Bush Fire Brigade
- Goomalling Opshop
- GOSAR
- Goomalling Endeavour
- community groups
- community events



# CHILDREN & YOUNG PEOPLE

Children and young people are vital to the future of our community. The health and wellbeing of our children and young people sets the foundation for our community's longevity.

Council is investing significant staffing resources to develop unstructured recreation spaces for children and young people, as well as youth activities to build capacity and provide opportunities for participation.

Gooma Squad is Council's link to young people, providing a vessel for advocacy and space for young people to design programs, events, and projects to meet their needs.

## Recreation

Goomalling is a very active community with a number of competitive sporting teams for children and young people.

- karate
- netball
- hockey
- AFL football
- cricket
- youth activities
- toy library
- swimming
- Go-Karts
- tennis
- Pony club

To see the full range of community groups

visit: [www.goomalling.wa.gov.au/community-groups-directory.aspx](http://www.goomalling.wa.gov.au/community-groups-directory.aspx)

## Volunteer opportunities

Volunteering is essential in rural communities to ensure the sustainability and continuity of community groups, as well as some of our essential services. It is a great opportunity for young people to learn new skills.

These organisations are always looking for volunteers:

- St John Ambulance
- Goomalling Bush Fire Brigade
- Goomalling Opshop
- GOSAR
- Goomalling Endeavour
- community groups
- community events

## Toy Library

Borrow toys, games, and puzzles. All of the toys are of good quality and are carefully selected to provide entertainment and educational benefits to enrich the daily play of children from birth to seven years old.

Fridays 9.30am-10.30am (during school terms) to coincide with Better Beginnings Storytime at the Community Resource Centre (at 10.30am).

## Driver's Licence

The Shire of Goomalling Administration Office is the local Department of Transport agency where young people can apply for their learner's permit, complete their Hazard Perception Test and practical driving assessment (PDA).

Driving assessments are held **1 day per month**.

## **REGISTER AS A VOLUNTEER BEFORE A DISASTER HAPPENS!**

In the case of natural disasters such as fires and floods, people want to help out.

Large events are managed by State departments and all volunteers must be registered with **Volunteering WA** before they can assist.

Be prepared and be registered before an event happens, so that you can spend the valuable time helping on the ground rather than filling out paperwork.

**Register NOW <https://volunteer.org.au/>**

# PLANNING & BUILDING

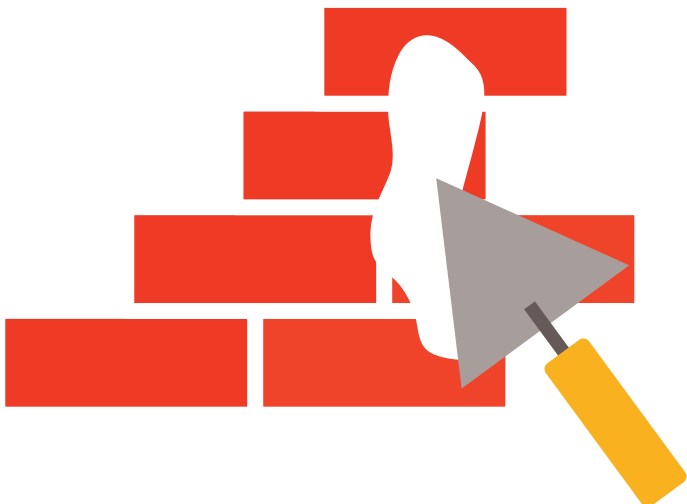
## Subdivision

Applications for subdivision and amalgamations of land are made directly to the Western Australian Planning Commission. The Commission will refer the application to Council and other relevant Government agencies for recommendations and approval.

You can contact the shire office to find out the zoning and R-code of your lot and whether it has subdivision potential.

Further information related to application for subdivisions and amalgamations should be directed to:

**Department of Planning**  
**Level 5, 140 William Street**  
**PERTH WA 6000**  
W: [www.planning.wa.gov.au](http://www.planning.wa.gov.au)



## Development Application (Planning Approval)

A development application isn't always necessary. It's already granted if you're building:

- a single house on a single residential-zoned lot, or
- a shed in town no bigger than 54 metres squared with 3m or lower wall height and it's constructed from NEW materials of brick or colorbond iron sheeting.

However, if you want to :

- use a sea container,
- demolish something,
- put a second house on any lot,
- is on Council's Heritage Inventory,
- build something on a farm that doesn't serve a farming purpose, (e.g. bed and breakfast, motorcycle track),
- building something on a rural zoned property
- build a shed bigger than 54 metres squared on a residential lot,

then you must apply for development approval.

Refer to Council's planning guide for more information or contact Council's planner if you have any enquiries:

Steve Thompson  
[steve@edgeplanning.com.au](mailto:steve@edgeplanning.com.au)  
M: 0409 107 336

## Building, renovations & demolitions

Council contracts an Building Surveyor for the provision of services in accordance with the *Building Act 2011*.

Rebecca Creighan  
rebecca@cfbuildingapprovals.com.au  
M: 0414 554 758

Refer to Council "[Building, renovation and demolitions in Goomalling How to Guide](#)" available on Council website or from the administration office.

There are also checklists available for certified, uncertified and commercial projects, as well as swimming pools to assist making the building application process as easy as possible.

Fees apply which are dependant on the value of the project and are subject to change.

## ***Did you know?***

By law, swimming and spa pools containing water **more than 30cm deep** must have an effective safety barrier that restricts access by young children

## Swimming Pools

Submit your [BA02 – Application for Building Permit] form signed by all owners, along with:

- site plans (showing fencing, house and pool gate); and
- fees payable.

Building Class: 10B

**All gates must open outward and the pool must be fully isolated from the house.**

### Rules for portable pools/spas

There are many types of portable pools, ranging from small plastic or inflatable paddling pools to larger more solid inflatable pools or flexible side pools with frames.

Any pool that is designed for swimming, wading, and paddling that contains water of a depth greater than 30cm, must be enclosed by an effective safety barrier that complies with the laws.

**To make sure your safety barrier checks all the boxes visit:**

[www.dmirs.wa.gov.au/portable-pools](http://www.dmirs.wa.gov.au/portable-pools)

# LOCAL WATERING HOLES & EATERIES

## Jennacubbine Tavern

22 Collins Street, Jennacubbine

P: 08 9623 2273

W: [jennatavern.com.au](http://jennatavern.com.au)

This "end of the road" steakhouse serves up a juicy grill, cooked in front of you. "Jenna" as the locals call it, is a family friendly tavern complete with a playground, Bali bar and accommodation.



## Goomalling Farmers Club

23 Quinlan Street, Goomalling

P: 08 9629 1010

Constructed in 1912 this beautiful piece of Goomalling's history is a local meeting place for a few casual beverages.

## Goomalling Tavern

61 Railway Terrace, Goomalling

P: 08 9629 1110

W: [goomallingtav.com.au/](http://goomallingtav.com.au/)

Opened in 1904 this centenarian has been nicely refurbished and is a great place to grab a cool arvo bevie before settling in for dinner and a comfortable nights stay.



## Goomalling Sport & Community Centre

Goomalling Recreation Ground  
47 Quinlan Street, Goomalling

E: [goomallingscc.bookings@gmail.com](mailto:goomallingscc.bookings@gmail.com)

Table Bookings: 0431 854 689

Event Bookings: 0458 291 340

The newest function centre in town, located at the recreation ground, GSCC offers a modern relaxed dining experience for Friday/Saturday dinner, sporting events or a post-work beverage.

## Lot 39 [Store + Cafe]

39B Railway Terrace, Goomalling

P: 0480 182 122 | [@lot39\\_storecafe](https://www.instagram.com/lot39_storecafe)

W: [www.lot39.com.au/](http://www.lot39.com.au/)

Open Tuesday to Saturday

Modern cafe and store carefully curated with in vogue home-wares, accessories and gourmet food; artisanal cakes and brews.



## Slater Homestead

62 Goomalling-Wyalkatchem Road,  
Goomalling

P: 0429 468 763 | E: [wendywill@bigpond.com](mailto:wendywill@bigpond.com)

W: [www.slaterhomestead.com.au](http://www.slaterhomestead.com.au)

Built in 1856 and Heritage Listed in 2004, the picturesque stone and mud brick dwellings are a must-see for travellers and visitors to the region.

Open Weekends 10am-4pm | April to October  
or **by appointment**

WEDDINGS | BOUTIQUE FUNCTIONS |  
TEAROOM | ACCOMMODATION



## Railway Station Cafe

Railway Terrace, Goomalling

P: 0409 097 610 | E: [railwayscg@gmail.com](mailto:railwayscg@gmail.com)

Friday to Monday 8am-4.30pm

If you're after a big brekky or a hearty lunch in a historic building then this is your jam!

Devonshire teas, or homemade chinese, there is something to satisfy everyone's tastebuds.

Pet friendly (free puppacino with every large coffee)



## Dunning's Shell (24 hr fuel)

17 Throssell Street, Goomalling

P: 08 9629 1550

Pizzas, fish and chips, salads, sandwiches, rolls, wraps and fast food.



## The Silver Possum

10 Forrest Street, Goomalling

Boutique accommodation and dining.  
Buffets on Wednesdays (booking essential)

P: 08 9629 1673 or 0414 832 938  
E: [thesilverpossum@gmail.com](mailto:thesilverpossum@gmail.com)

## BP Roadhouse

79 Main Street, Goomalling

P: 08 9629 1245

Takeaway or dine in at the BYO restaurant. Fish and chips, Rosie's chicken, burgers and more.



# HEALTH WELLBEING

## Medical

### Goomalling Health Service (Hospital)

Forrest Street, Goomalling

P: 08 9629 0100

- 24 Accident and Emergency
- 3 acute care beds
- 4 low care units (Quamby Lodge)
- 6 high care units (Sunshine Home)
- Telehealth video conferencing with Perth based specialists
- child health clinic
- occupational therapy
- physiotherapy
- speech therapy
- drug & alcohol counselling
- diabetic educator
- mental health counselling
- podiatry
- chiropractor

### Goomalling Medical Surgery

51-53 Railway Terrace, Goomalling

P: 08 9629 1166

- 75+ annual health check
- home medicine review
- immunisation
- wound care
- 45-49 year old health checks
- chronic disease management and care plans
- shared antenatal care
- dietitian (monthly)
- diabetic educator (monthly)
- team care arrangement plan
- Aboriginal health care

## Pharmacy

### Goomalling Pharmacy

37 Railway Terrace, Goomalling

P: 08 9629 1542

E: [info@gopharmacywa.com.au](mailto:info@gopharmacywa.com.au)

W: [www.gopharmacywa.com.au](http://www.gopharmacywa.com.au)

Open 6 days a week Monday to Saturday



## Mental Health

Yvonne Town  
Your Counselling Therapist  
51-53 Railway Terrace, Goomalling  
**P:** 08 9295 0948

- psychologist
- neurofeedback therapy
- clinical hypnotherapy

### Online Phone Support

- Lifeline Australia Crisis Support 13 11 14
- National Youth Mental Health Foundation  
<http://www.headspace.org.au/>
- Rurallink 1800 552 002

## Chiropractor

Dr Deanna Hansen  
Wheatbelt Chiropractic & Healthcare  
Goomalling Community Centre  
51-53 Railway Terrace, laneway entry,  
Goomalling  
**P:** 9622 2282  
**E:** [deannahansenchiropractic@gmail.com](mailto:deannahansenchiropractic@gmail.com)

Thursdays weekly  
**by appointment only**

### Online Bookings

<http://www.hansenchiro.com.au/>

Goomalling | Dowerin | Northam

## Gymnasium

### Gymnasium

Goomalling Community Gymnasium  
Goomalling Recreation Ground  
Cnr Quinlan and Hoddy Street, Goomalling

**24/7 card access | pilates**

Administration - Shire of Goomalling  
**P:** 9629 1101  
**E:** [goshire@goomalling.wa.gov.au](mailto:goshire@goomalling.wa.gov.au)

## Wellness

The Loving Larder  
Di Hutchison - Health & Wellness Coach  
0427814004 **W:** [www.thelovinglarder.com.au](http://www.thelovinglarder.com.au)  
**E:** [thelovinglarder@gmail.com](mailto:thelovinglarder@gmail.com)

Personal Trainer - Natasha Read  
**M:** 0421 655 283

Rural Movement - Josie Thomson  
Personal Trainer  
[josie.theruralmovement@gmail.com](mailto:josie.theruralmovement@gmail.com)  
[@theruralmovement](https://www.instagram.com/theruralmovement)

## Physiotherapy

Dean Butler B. Sc. (physio) GCOSH  
**Wheatbelt Physiotherapy**  
Goomalling Hospital  
Forrest Street, Goomalling  
**M:** 0472 756 323  
**E:** [wheatbeltphysio@gmail.com](mailto:wheatbeltphysio@gmail.com)

Book appointments online via Facebook  
[www.facebook.com/wheatbeltphysio](http://www.facebook.com/wheatbeltphysio)

# EDUCATION EMPLOYMENT

## Early childhood

### Better Beginnings

Reading to babies from birth is one of the best things you can do to build their early language skills and gives them an early love of books that will support their future success as readers.

Enjoy storytime, creativity and socialising with the enthusiastic staff at the Goomalling CRC.

**Fridays 10.30-11.30am.**

51-53 Railway Terrace, Goomalling

**P:** 08 9629 1570

### Gumnuts Early Learning Centre

Provides quality daycare for children aged 2 months up to 12 years, offering early childhood learning opportunities.

Lesser Hall

34 Quinlan Street, Goomalling

**P:** 08 9629 1188

### Playgroup

Age 0-5 years old, carers and grandparents.

Playgroup offers a relaxed and safe environment for children to play and learn together and for their carers to meet for a cuppa and a chat. Located at **Goomalling Primary School (from Eaton St). Wednesday 9-11am**

## Primary school

### Goomalling Primary School

Cnr Hoddy & Eaton Streets (PO Box 146), Goomalling

**P:** 08 9629 1055 | **F:** 08 9629 1364

**E:** [goomalling.ps@det.wa.edu.au](mailto:goomalling.ps@det.wa.edu.au)

**W:** [www.goomallingps.wa.edu.au/](http://www.goomallingps.wa.edu.au/)

**F:** [www.facebook.com/pages/category/Elementary-School/Goomalling-Primary-School-103142244381348/](https://www.facebook.com/pages/category/Elementary-School/Goomalling-Primary-School-103142244381348/)

Kindy (4) to year 6

### Sacred Heart Catholic School

Hoddy Street (PO Box 86), Goomalling

**P:** 08 9629 1174 | **F:** 08 9629 1486

**E:** [admin@shcsgoom.wa.edu.au](mailto:admin@shcsgoom.wa.edu.au)

**W:** [www.shcsgoom.wa.edu.au](http://www.shcsgoom.wa.edu.au)

**F:** [www.facebook.com/SacredHeartGoom/](https://www.facebook.com/SacredHeartGoom/)

3-year-old to year 6



## High school (age 12-17)

**Dowerin District High School** is just 20 minutes away from Goomalling and has classes to year 10. The bus picks-up local students in the rest bay opposite Goomalling Tavern.

School buses run from Goomalling to **Northam Senior High School** and **St Joseph's School Northam**.

**Cunderin College of Agriculture** offers courses in agriculture, manufacturing, automotive and construction for year 11 & 12 students. There is boarding available.

## Tertiary education

- Studying externally at university or TAFE? Exam supervision can be arranged for you at the Goomalling Community Resource Centre.
- **Central Regional TAFE** offers a wide range of qualifications including automotive, building and general civil construction, information technology and business.
- **Muresk Institute** offers courses in agribusiness, bio-sciences and environmental biology.

## Traineeships and apprenticeships

**Local businesses employ trainees and apprentices, as do employers in nearby towns.**

Directions WA based in Northam delivers apprenticeships, traineeships, training and employment services to the Wheatbelt.

## Job seekers

Directions WA and Max Solutions are both based in Northam and assist clients to find suitable employment options.

### Directions WA

133 Fitzgerald Street, Northam

**P:** 9622 6500

**W:** [www.directionswa.com.au](http://www.directionswa.com.au)

### Max Solutions

139 Fitzgerald Street, Northam

**P:** 9621 0300

**W:** [www.maxsolutions.com.au](http://www.maxsolutions.com.au)

### Disability Employment Services

For job seekers with disability, there are specialised services to cater to your needs. Essential Personnel is an organisation that empowers individuals through linking them with appropriate employers.

### Essential Personnel

262 Fitzgerald Street, Northam

**P:** 9622 3476

**W:** [www.essentialpersonnel.org.au](http://www.essentialpersonnel.org.au)





# GO SERVICE & RECYCLING

**Where:** White Street. Goomalling

**When:** Collections 2nd Sunday of the Month from 9am

**Contact persons:** Rolly & Chris Van Gelderen, Cherie Broadhurst and Ian Anderson

**Email:** [goomaservice@hotmail.com](mailto:goomaservice@hotmail.com)

**Postal Address :** PO Box 42, Goomalling

---



The role of GO Service and Recycling (GOSAR), is to provide a avenue for community fundraising via various recycling services. The organisation is run by volunteers and all funds raised are donated back to the community.

To date, GOSAR has contributed funding to Goomalling Primary School, Sacred Heart Catholic Primary School, Mortlock Pony Club, Wheatbelt Wado Ryu Karate Club, Goomalling Community Garden, Royal Flying Doctor Service and Goomalling Aboriginal Corporation.

**GOSAR are registered as a donation point with a scheme ID for the Container Deposit Scheme .**

GOSAR provide yellow bins to residents wishing to donate their eligible containers to GOSAR to fundraise on behalf of the Goomalling community. Bins are emptied on the 2nd Sunday of the month from 9.00am.

If you are interested in having a yellow wheelie bin and are committed to donating your eligible containers to GOSAR please email GOSAR on the email above, or contact one of the volunteers.



Goomalling  
Community Resource Centre

*Your local connection*



Centrally located at 51-53 Railway Tce, Goomalling

**Internet | Library | Visitor Information | Centrelink Access Point**

In a modern, fresh and friendly environment.

**P:** 9629 1570 | **E:** [goomallingcrc@gmail.com](mailto:goomallingcrc@gmail.com) | **W:** [www.goomalling.crc.net.au](http://www.goomalling.crc.net.au)

*Goomalling Historical Society Inc.*

# GOOMALLING MUSEUM



28 Throssell Street, Goomalling // **visits by appointment only**

Contact: Geoff or Thérèse Wise 0429 906 918 | Peta Marrell 0467 895 811 | Harold Forward 0428 291 195

## **You're New in Town**

What skills and interests have you brought?

If you enjoy sorting, cataloguing, arranging displays, researching, talking to visitors - any or all of these skills are valuable to us at the Historical Society and you'll learn more about the town you've chosen to call home.

Tuesday afternoon between 1pm and 3pm, come and join us for relaxed and informal pottering at the museum



# BE INFORMED...

Name:

Email:

Mobile:

- Council Quarterly Newsletter
- Harvest Ban/Emergency SMS
- DrumMuster SMS
- GO Local Fire Response (WhatsApp)  
\*\*\*Not 000 for farm fire fighting utilities ONLY

📷 @visitgoomalling

📘 facebook.com/GoomallingShire/  
www.goomalling.wa.gov.au

Return to: goshire@goomalling.wa.gov.au



P: 1300 794 054



St Vincent de Paul Society  
WA (INC)  
*good works*

## EMERGENCY FOOD RELIEF

Open the third Thursday  
of every month  
(Once a month)  
10am-12noon

Uniting Church  
17 Quinlan Street  
Goomalling WA 6460





# ENVIRONMENTAL HEALTH

The Shire of Goomalling provides a range of environmental health services including in relation to **pool safety, food safety, disability access, mosquito and other pest control, wastewater management and waste facilities.**

## Food

If your business or organisation has anything to do with food (producing/serving/selling) you must register that business/organisation via the **food premises notification form**.

**FoodSafe Online** is a Food Handler Training Program provided by Environmental Health Australia (Western Australia). This is a fully online course with training videos and questions. Goomalling residents can access this course **free of charge** (normally \$35) with Discount Voucher "**FSGOOMA369**".

Once you have successfully completed the course, you will receive a certificate which we require a copy of for our records.

Under the Food Safety Standards Australia New Zealand Standard 3.2.2 Food Safety Practices and General Requirements, owners of food businesses are responsible for making sure that people who handle food or food contact surfaces in their business, and the people who supervise this work, have the skills and knowledge they need to handle food safely.

Volunteers who handle food for their clubs and organisations are also encouraged to complete the training.

Anyone who intends to **serve food at public events**, whether as a permanent business or temporary such as food stalls/community organisations, are required to notify the Shire via the **Serving Food at Public Events form**. This notification form is required for each event.

## Wastewater

**Wastewater services customer charter 2012** - sets out the broad philosophy of the Shire of Goomalling in supplying sewerage services to the Goomalling Townsite in accordance with the Licence issued to the Shire by the Economic Regulation Authority. A copy is available on Council's website.

## INSPECTIONS

Swimming pools/Spaces (every 4 years)  
Food Premises (annually)



# GOOMALLING MEDICAL SURGERY

51-53 Railway Terrace, Goomalling  
P: 9629 1166 F: 9629 1288



## Wheatbelt Physiotherapy

Dean Butler  
B.Sc (physio) grad cert OHS  
APAM

PO Box 1055, Toodyay 6566  
wheatbeltphysio@gmail.com

Ph: 0472 756 323  
Fax: 6316 1411

## Hansen Chiropractic

Dr Deanna Hansen  
BSc (Chiro/BChiro) BSc (Biomed)  
Chiropractor

Ph: 08 9622 2282  
Email: hansenchiroreception@gmail.com  
Online Bookings: www.hansenchiro.com.au



## GOOMALLING PHARMACY

HERE TO HELP

37 Railway Terrace, Goomalling

P: (08) 9629 1542

W: www.gopharmacywa.com.au

Health advice | Prescriptions | Prescriptions on file | SMS reminders | Webster packs |  
Vaccinations | In-store medication reviews | Home medication reviews | Blood pressure/  
Blood glucose testing | Wound care | Giftware | Perfumes | Baby products | Vitamins |  
Health foods | Sunglasses/hats | Skin care



9629 1222 | 39A RAILWAY TCE, GOOMALLING



### JAYDON'S CARPENTRY

WHEATBELT REGION  
M: 0439 300 392  
jaydon.bird.1@gmail.com



renovations  
wall frames  
roofing  
re-roofing  
decks  
cladding  
sheds  
patios  
doors and windows  
gyprocking  
tiling  
mini loader hire



## HARRISElectrical SERVICING

M: 0477 556 764  
E: harriselectricalservicing@gmail.com



25 Railway Tce, Goomalling  
P: 9629 1009 E: rbmotors@wn.com.au



Motor Vehicle Dealer  
Licence No.: 21172



**WHEATBELT WADO RYU**  
KARATE - GOOMALLING

Train with State,  
National and  
Oceania karate  
Champion and  
State Coach every  
**Tuesday.**

**Enjoy your first  
month training  
FREE**



# JENNACUBBINE TAVERN

P: 08 9623 2273 E: JENNAPUB@CLASSICIT.NET  
W: WWW.JENNATAVERN.COM.AU



## GOOMALLING FARMERS CLUB INC. EST. 1912

- **Bar open 7 days a week. from 4pm**
- **New members welcome**

23 Quinlan Street, Goomalling  
[goomallingfarmersclub@gmail.com](mailto:goomallingfarmersclub@gmail.com) | 9629 1010

47 QUINLAN STREET, GOOMALLING



OPENING HOURS  
WED TO SAT  
4.30PM-12.00AM

SUNDAY  
4.30PM-10.00PM

P: 08 9629 1889  
E: GOOMALLINGSCC.BOOKINGS@GMAIL.COM

**Community Mural x Melski**  
**55-57 railway Terrace**

**FUNDED BY GOOMALLING CRC**



# COUNCIL WASTE SERVICES

## Refuse site

Waterhouse Way, Goomalling

## Opening Hours

Wednesday 8am-1pm

Friday 12.30pm-5.30pm

Sunday 10am-5pm

***Closed Christmas Day, Boxing day & Good Friday***

## Goomalling Tip Shop & Reuse Centre

Located at the Goomalling Refuse site, Waterhouse Way, you can sift through the treasure trove of reusable materials.

Opening Hours are when refuse site is open

## Goomalling Community Opshop

Railway Terrace, Goomalling

Drop off your unwanted items or pick up a bargain. The facility is run by volunteers and 100% of profits are donated back to the community.

Mon-Thurs- Friday 9am-

Sat - 9am -12pm

## Recycling collections at the Shire Office

The following recyclables can be dropped off at the Council Office:

- pens and markers;
- CD's record, tapes, VHS, USB, hard drives;
- beauty products containers; and
- toys.
- PlanetArk Ink cartridges
- Batteries

## Avonwaste 2 Bin System

Shire of Goomalling offers a two bin waste system for properties in Goomalling Townsite. All general waste materials are collected in the "green lid" wheelie bin on a weekly basis. Collected Wednesday in the Goomalling townsite and Konnongorring and Tuesdays for Wongamine and Jennacubbine.

All materials identified as recyclable are collected in the 'yellow lid' wheelie bins on a fortnightly basis, without the need to separate them, they still need to be clean & dry.

It is important to familiarise yourself with recycling do's and don'ts and learn to recycle right to avoid "contamination" causing our load of recycling to become unusable.

[www.RecycleRight.wa.gov.au](http://www.RecycleRight.wa.gov.au) has very clear and detailed information as well as a Recycle Right App.



## Annual Kerbside Rubbish Collection

Annual rubbish collection held in the townsite in late August and early September, for garden waste and large items.

## Booking Essential

# *drum*MUSTER

---

## MARCH & SEPTEMBER



### CONTAINERS MUST BE

- TRIPLE OR PRESSURE CLEANED
- CLEAN - NO CHEMICAL RESIDUE
- INSPECTED BY A DRUMMUSTER INSPECTOR
- LIDS MUST BE LEFT OFF
- METAL CONTAINER MUST BE PUNCTURED

**BOOKINGS ESSENTIAL - 08 96291101**

Book your place and advise number of containers to the shire office by

---

**drumMUSTER depot**  
56 William Street  
GOOMALLING WA 6460  
[www.drummuster.org.au](http://www.drummuster.org.au)

---



### Contact

Julie Chester 0427 291 223  
Shire office 08 9629 1101



**drumMUSTER**

# OTHER RECYCLING SERVICES



## GO Service & Recycling (GOSAR) Depot

White Street, Goomalling

- newspapers (NO cardboard or office paper)
- Plastic MILK BOTTLES ONLY (clean, no tops)
- Aluminium cans
- vehicle batteries and radiators
- non-ferrous metals (aluminium, copper, tin)  
(no steel, stainless steel or iron)

All recycling can be dropped off at the depot on White Street into their allocated "bins".

GOSAR is a registered donation point with a scheme ID, all funds raised donated back to the community. **Bins are emptied 2nd Sunday of the month from 9am.**

## To order your bin for eligible containers contact:

E: [goomaservice@hotmail.com](mailto:goomaservice@hotmail.com)  
PO Box 42, Goomalling WA 6460

## Container Deposit Scheme

Containers for Change is a state-wide container deposit scheme that lets you cash in eligible containers for 10-cents each. The refund point in Goomalling is located at:

62 Main Street, Goomalling  
E: [xtremerhinoenterprises@gmail.com](mailto:xtremerhinoenterprises@gmail.com)  
P: 0458 260 273

**Thursday** 9am-5pm | **Saturday** 8am-12noon

Any container with the **10c** symbol on the back is eligible for refund at the collection point. For more information visit <https://www.containersforchange.com.au/wa/>

## TerraCycle

TerraCycle offers a range of free programs that are funded by conscientious companies, as well as recycling solutions available for purchase for almost every form of waste.

Terracycle aims to offer solutions for hard to recycle items.

Register online for any of the programs (some paid and some free), request a mailing slip, package your recyclables and simply mail them off.

Find out more from [www.terracycle.com.au](http://www.terracycle.com.au)

Locally the following waste streams can be recycled

1. blister packs @ Goomalling Pharmacy
2. @ Opshop or Shire office
  - a. old toys
  - b. beauty products
  - c. pens, pencils and markers
  - d. media storage, cd, dvd, usb etc

## UPPAREL

Their mission is to reduce the number of textiles that end up in landfill, due to massive garment overproduction and non-existent recycling and upcycling initiatives.

Upparel offer textile recycling service with a fee for service based on weight, then you receive \$25 store credit to spend on essentials.

Find out more <https://upparel.com.au/>

# RANGER SERVICES

For **urgent** issues such as dog attacks, stock on roads etc, Irene from Rural Ranger Services can be contacted out of business hours on **0412 561 828**.

Irene visits Goomalling on a regular basis. Her duties as a ranger include:

- firebreaks enforcement under *Bush Fire Act*
- impound animals issue warning and infringement notices under the *Dog Act 1976 & Cat Act 2011*
- Stray stock
- Call outs as required for matters in relation to livestock, bushfire and animal control.
- littering and abandoned vehicles
- microchipping cats and dogs
- parking infringements

## Cat & Dog Registrations

### Dogs

All dogs need to be registered from the age of 3 months.

In accordance with the Act dogs are required to be **de-sexed, microchipped and registered**. Microchip and de-sex evidence needs to be submitted to Council.



The limit on the number of dogs that may be kept on any premise is:

- 2 dogs over the age of 3 months and the young of those under the age if the premises is situated in the townsite; and
- 4 dogs over the age of 3 months and the young of those dogs under the age if the premises are situated outside the townsite.

### Cats

All domestic cats over 6 months of age must be **microchipped, desexed and registered** with your local government.

Microchip and sterilisation evidence must be provided to the local government at the time of registration.

Curfews apply for cats - they should be kept inside at night.

The limit on the number of cats that may be kept on any premise is 3.

**IMPORTANT: To help identify your animals ensure they wear a collar and registration tag.**

Fees are payable for a 1 year, 3 years or Life period. 50% discount applies for pension card holders and 75% discount for working dogs.

### SNAKES

JAYDEN COUZENS | [JYDENS REPTILE REMOVAL](#)  
M: 0488 278 606

### WILDLIFE RESCUE

P: 08 9474 9055



Classes from 3YO Kindy (Little Possums Early Learning Centre) to Year Six.

Drop off service offered for 3YO Kindy children to Goomalling Gumnuts.

For children who wish to have a secondary Catholic education, Sacred Heart is a feeder school to St Joseph's, Northam.

Sacred Heart is supported by a bus service for all out-of-town students.

MiniLit Literacy intervention and Academic Extension Groups offered as well as specialist Music, Art, Science, Indonesian and Physical Education.

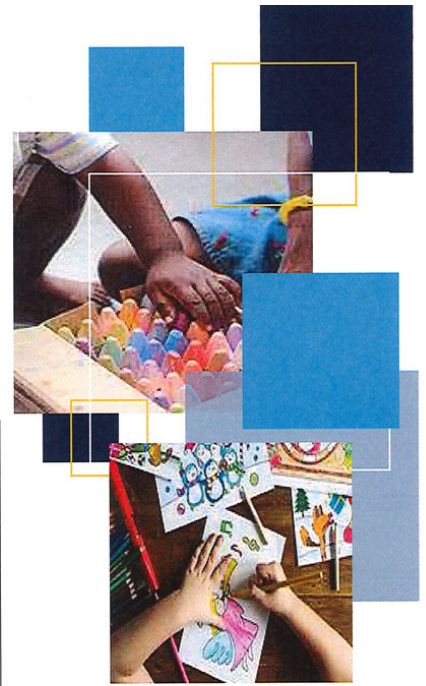


Sacred Heart is a unique Catholic rural community where everyone is nurtured, respected and valued as God's children. We strive to develop each child's full potential by recognising their individual giftedness as part of God's creation.

Please call to book a tour if you would like to see more!

(PO Box 86)  
20 Hoddy Street  
Goomalling WA 6460

Ph 08 9629 1174  
Fax 08 9629 1486  
Email: [admin@shcsgoom.wa.edu.au](mailto:admin@shcsgoom.wa.edu.au)  
Website: [www.shcsgoom.wa.edu.au](http://www.shcsgoom.wa.edu.au)



**Sacred Heart  
Catholic School**

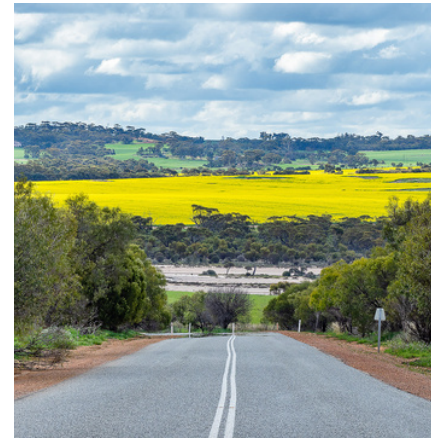
# Your sprayer experts

- ▶ Sprayer sales, parts and service
- ▶ Hardware supplies
- ▶ Gas supplies



**GOLDACRES**  
Sprayer Centre

43-44 Main Street, Goomalling



**Goomalling  
Community  
OpShop**

Railway Terrace, Goomalling  
100% proceeds go back to the community.  
**Volunteer | Shop | Donate**



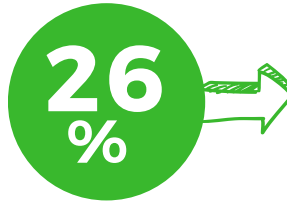


# 55

THOUSAND

DONATED BACK TO THE  
COMMUNITY SINCE 2006

We've been investing in local projects since 2006. We currently offer grants twice yearly with \$8000 contributed annually. So far in 2023 we've donated \$4,212.65.



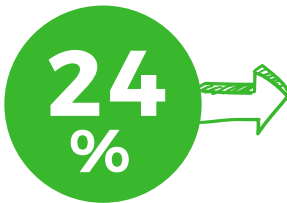
### Education // \$14,036

This includes Gumnuts Early Learning Education Centre, Goomalling Primary, Sacred Heart Catholic School, playgroup and the library for various resources, events and equipment.



### Community // \$13,550

This included investment in the community garden, mens shed and community facilities.



### Health // \$13,320

This includes equipment and maintenance for both the hospital and medical surgery.

### Other categories of investment



**Youth**  
\$3,500



**Heritage**  
\$3127.91



**Sport**  
\$2813.50



**Seniors**  
\$1050



**Environment**  
\$1020



**Events**  
\$1000



**Ballardong**  
\$1390

### OTHER BENEFITS

- In addition to providing essential funding for community groups, the opshop has invested significant funds into beautifying and maintaining a shop front on Railway Terrace;
- Provides a place for community members to volunteer and connect;

### ENVIRONMENTAL IMPACT

- The opshop diverts valuable resources that would otherwise be sent to landfill, by providing a local space for the community to donate their secondhand goods.
- We will start measuring our exact impact in the 2023-2024 financial year, including waste diverted from landfill. Waste transferred to Terracycle and the local Tipshop.

### MEDIA CONTACT:

Tahnee Bird | Community Development Officer  
Shire of Goomalling  
E: cdo@goomalling.wa.gov.au



Community Bank • Goomalling & Districts

# Making good things happen

When you bank with us, profits pour into the community. \$520,000 so far.

A bank giving back sounds unusual. For us, it's business as usual.

Find out more. Call us on 9629 1999 or search Bendigo Bank Goomalling.



# ARE YOU BUSHFIRE READY?

[areyouready.wa.gov.au](http://areyouready.wa.gov.au)

*The Shire of Goomalling works with volunteer bush fire brigades and the local community for fire prevention. To assist in preventing outbreak of and severity of fire the following restrictions and requirements must be followed by all land owners and occupiers.*

## Restricted Burning Period

19 September to 31 October (annually)  
15 February to 29 March (annually)

Restricted Burning Period is declared by the Department of Fire and Emergency Services under section 18 of the *Bush Fires Act 1954*. During these periods a valid permit must be obtained from the Shire for any burning activity. All permit conditions must be strictly adhered to.

## Prohibited Burning Period

01 November to 14 February (annually)

During the Prohibited Burning Period **NO** burning is permitted.

These above Restricted and Prohibited Burning Periods are subject to seasonal variations and alterations - so please check with the Shire to confirm current status before burning.

## Firebreaks

Shire of Goomalling requires all land owners to install firebreaks and/or reduce the fuel load around all properties and dwellings every year by 31 October and to maintain it until 26 April. Council's firebreak notice is posted to all property owners along with their rate notice. The firebreak notice is also available via the Shire's website. Firebreak inspections are carried out on all land annually and if the property is not maintained in accordance with the firebreak notice a \$250 fine may be issued to the landowner along with a requirement for the land owner to install the breaks.

## Get Involved

The Shire of Goomalling has volunteer bush fire brigades located in Goomalling (Townsite), Jennacubbine and Konnongorring. Community volunteers form the backbone of the brigades. Joining a bush fire brigade is a great way to meet fellow residents while providing a crucial community service. If you are interested in joining your local bushfire brigade please contact the Shire.



# EMERGENCY SERVICES

**RING 000** for fire, ambulance and urgent police attendance

## **Rob Koch**

Community Emergency Services Manager (CESM)

Shire of Goomalling

E: [cesm@toodyay.wa.gov.au](mailto:cesm@toodyay.wa.gov.au)

M: 0458 042 104

## **AMBULANCE**

### **St John Ambulance Sub-centre**

Forrest Street, Goomalling

2 ambulances available 24 hrs a day.

**NEW VOLUNTEERS WELCOME**

## **FIRE & RESCUE**

### **Volunteer Fire & Rescue**

12 Quinlan Street, Goomalling

Radio Channel 29 (VHF)

**SES 132 500**

## **POLICE**

### **Operations Centre 131 444**

#### **Goomalling**

14 Quinlan Street, Goomalling

P: 08 9629 1200

#### **Wheatbelt**

Northam Police Complex,

Gairdner Street, Northam

P: 08 9622 4260

## **ACCIDENT & EMERGENCY**

### **Goomalling Health Service**

Forrest Street, Goomalling

P: 08 9629 0100

## **UTILITY EMERGENCIES**

Western Power **13 13 51**

Water **13 13 75**

Telstra **13 22 03**



**DIAL BEFORE YOU DIG**

[www.1100.com.au](http://www.1100.com.au)