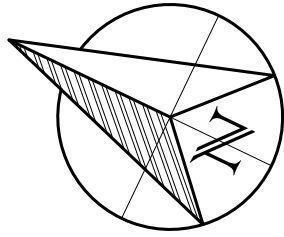


POWER POLE REPLACEMENT 0700 TO 1700






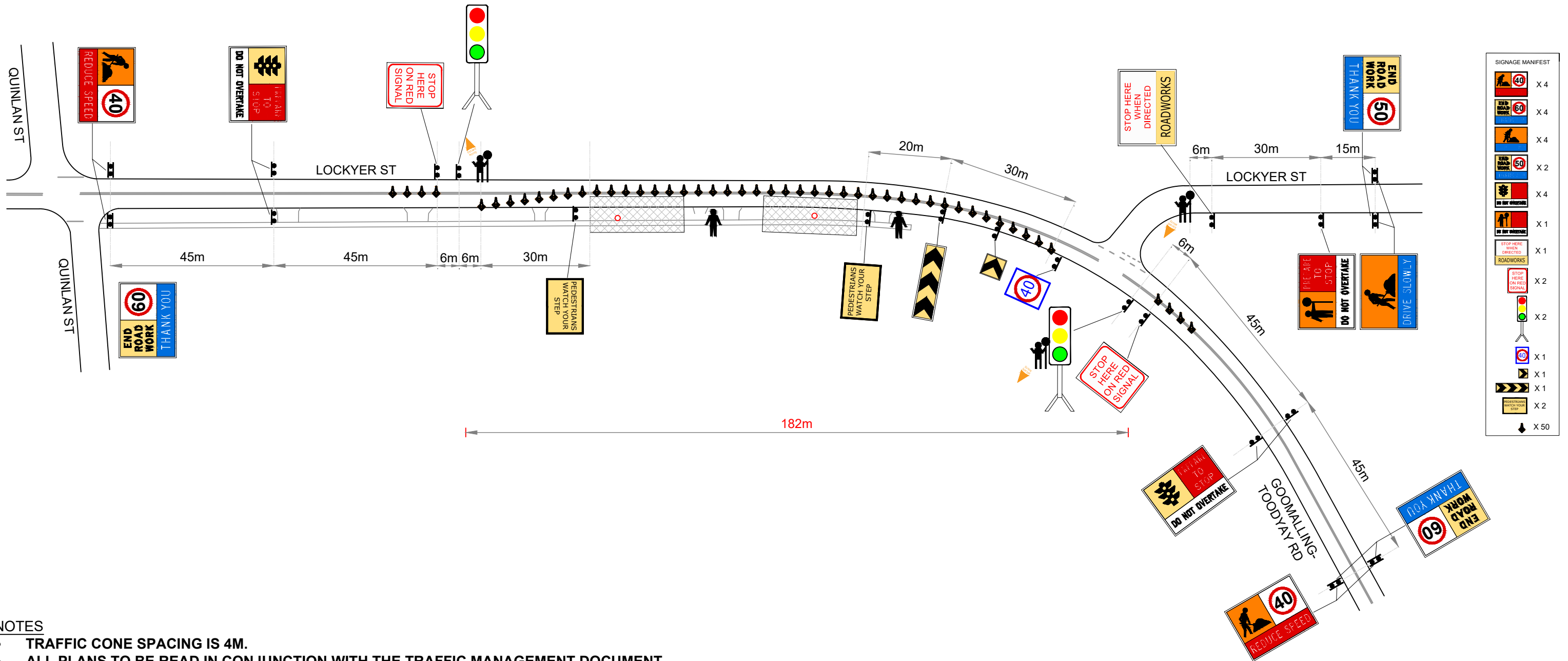
NOTE: TRAFFIC CONTROLLERS ARE TO ASSIST PEDESTRIANS SAFELY PAST THE WORKSITE

NOTE: DUE TO THE LIMITED ROAD WIDTH, GATING CONES ARE NOT TO BE PLACED ON THE CENTRE OF THE ROAD UNLESS INDICATED. SEE TMP SECTION 3.2.

SPEED REDUCTION REVERSIBLE FLOW






LEGEND

-  WORKSITE
-  POLE
-  TRAFFIC CONE (4m)



NOTES

- TRAFFIC CONE SPACING IS 4M.
- ALL PLANS TO BE READ IN CONJUNCTION WITH THE TRAFFIC MANAGEMENT DOCUMENT
- WHERE SPEED SIGNS ARE INCORPORATED IN MULTI-MESSAGE SIGNS THAT ARE DUPLICATED THE SPEED SIGN WILL ALWAYS BE LOCATED NEAREST TO THE TRAFFIC
- THE LOCATION OF SIGNS AS SHOWN ON THIS PLAN MAY BE VARIED SLIGHTLY DURING IMPLEMENTATION TO IMPROVE VISIBILITY AND EFFECTIVENESS AS PER THE AGTMM PT 6. ANY CHANGES TO BE DOCUMENTED
- ALL REDUNDANT SPEED SIGNS TO BE COVERED
- AFTER INSTALLATION A DRIVE - THROUGH INSPECTION IS TO BE CONDUCTED AND SIGNS ADJUSTED FOR MAXIMUM EFFECTIVENESS

| | | | | | | | | | | |
|--------------------------------------------------------------------------------------------------------------------------------------------------------------------------------------------------------------------------------------------|-----------------------------------------------------------------------------------------------------------------------------------------------------------------|-------|------------|------------------|---------------------------|------------------|---------------------------------------------------------------------------------------|-------------------------|--------------------------------------------|---------------------------------------------------------------------------------------------------------------------------------|
|  LGC TRAFFIC MANAGEMENT LGC TRAFFIC HEAD OFFICE 6 BUSHBY ST, BELLEVUE WESTERN AUSTRALIA 6056 (08) 9374 0161 CONTACT@LGCTRAFFIC.COM.AU |  GENUS INFRASTRUCTURE 11-15 COOPER AVE KENWICK WA 6107 9390 6999 | REV # | DATE | COMMENTS | NAME | ACCREDITATION | SIGNATURE | DATE DRAFTED: | SCALE: | DRAWING NO: |
| | | 0 | 16/01/2024 | ORIGINAL VERSION | DESIGNED BY: DARREN HOUGH | AWTM 22-05201-03 |  | 16/01/2024 | NOT TO SCALE | LGCP-5958-001 |
| | | 01 | 25/01/2024 | REVISED VERSION | DRAFTED BY: DARREN HOUGH | AWTM 22-05201-03 |  | 60 KM/H | LOCATION: LOCKYER ST GOOMALLING | REVISION: REV 01 |
| | | | | | REVIEWED BY: CLANSY HOLT | AWTM 21-3216-05 |  | WORKSITE SPEED: 40 KM/H | ROAD AUTHORITY: MRWA & SHIRE OF GOOMALLING | LGCTE0020 (TGS) ISSUE: 12/10/23 REV 2 FOR THE MOST CURRENT VERSION OF THIS CONTROLLED DOCUMENT, REFER TO THE LGC DATA SERVER |