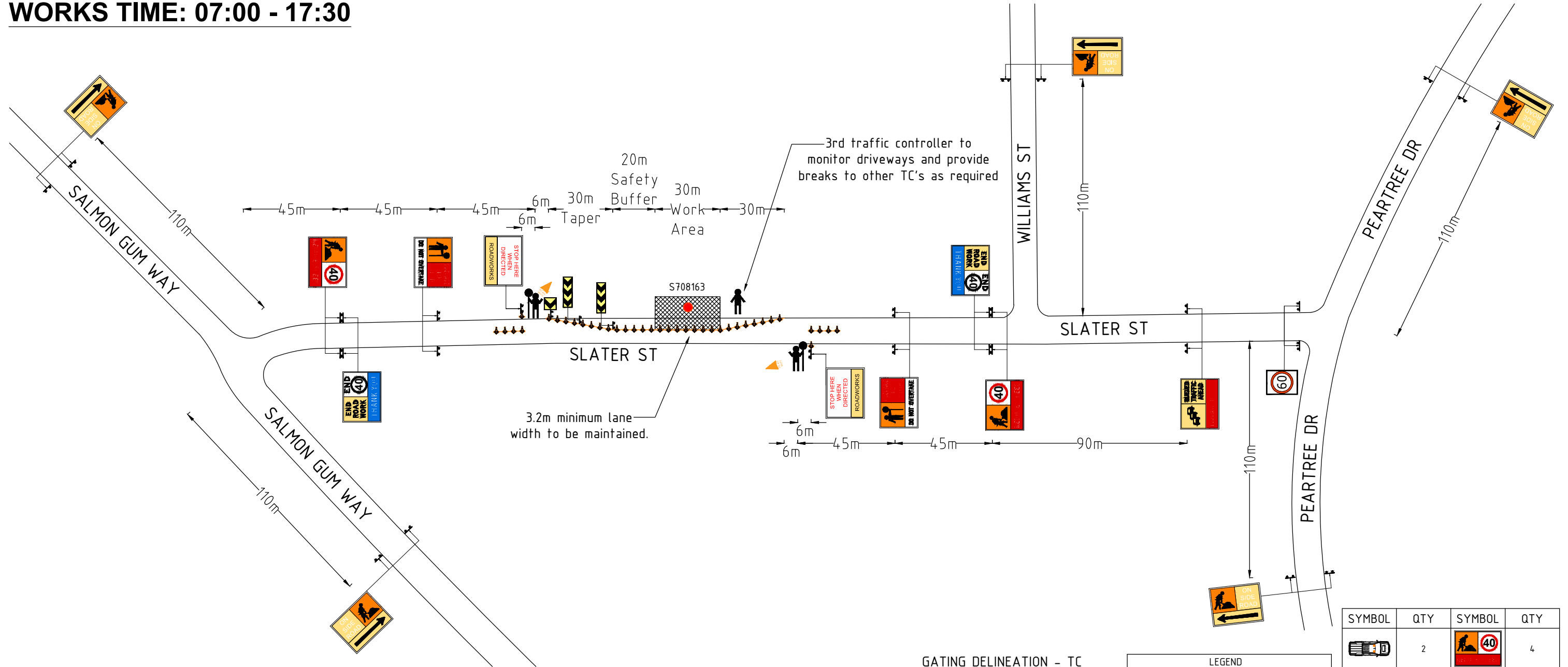


# WORKS: CROSSARM AND INSULATOR REPLACEMENT WORKS

WORKS DATE: 08/04/2024

WORKS TIME: 07:00 - 17:30

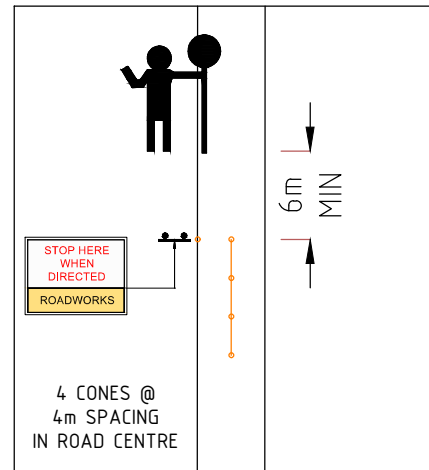
## REVERSIBLE FLOW SPEED REDUCTION TO 40 KM/H



**NOTES**

- CONE SPACING 4m C/C MAX.
- AS THE WORKS PROGRESS THE TRAFFIC MANAGEMENT SHALL BE DISMANTLED AND ADJUSTED TO SUIT THE IMMEDIATE SITE CONDITIONS.
- ALL PLANS TO BE READ IN CONJUNCTION WITH THE TRAFFIC MANAGEMENT DOCUMENT
- WHERE SPEED SIGNS ARE INCORPORATED IN MULTI-MESSAGE SIGNS THAT ARE DUPLICATED THE SPEED SIGN WILL ALWAYS BE LOCATED NEAREST TO THE TRAFFIC.
- THE LOCATION OF SIGNS AS SHOWN ON THIS PLAN MAY BE VARIED SLIGHTLY DURING IMPLEMENTATION TO IMPROVE VISIBILITY AND EFFECTIVENESS AS PER AGTTM. ANY CHANGES TO BE DOCUMENTED.
- ALL REDUNDANT SPEED SIGNS TO BE COVERED.
- AFTER INSTALLATION A DRIVE - THROUGH INSPECTION IS TO BE CONDUCTED AND SIGNS ADJUSTED FOR MAXIMUM EFFECTIVENESS.

**GATING DELINEATION - TC**



LEGEND	
SYMBOL	DEFINITION
	WORK AREA
	ROAD
	DRIVEWAY
	CONE (DELINEATION)
	TRAFFIC CONTROLLER
	POWER POLE
	TC ESCAPE ROUTE

SYMBOL	QTY	SYMBOL	QTY
	2		4
	3		2
	38		2
	4		4
	2		6
	4		2
			1

<p><b>LGC</b> TRAFFIC MANAGEMENT LGC TRAFFIC HEAD OFFICE 6 BUSHBY ST, BELLEVUE WESTERN AUSTRALIA 6056 (08) 9374 0161 CONTACT@LGC.TRAFFIC.COM.AU</p>	<p><b>GENUS</b> GENUS INFRASTRUCTURE 11-15 COOPER AVENUE, KENWICK WA 6107 (08) 9390 6999</p>	REV #	DATE	COMMENTS	NAME	ACCREDITATION	SIGNATURE	DATE DRAFTED:	SCALE:	DRAWING NO.:	
		0	07/03/2024	ORIGINAL TGS DESIGN	DESIGNED BY:				07/03/2024	NOT TO SCALE	LGCP - 6324 Rev 0-001
					DRAWN BY:	DARYL MCCORMICK	AWTM 21-3261-01		POSTED SPEED:	LOCATION:	REVISION NO.:
			REVIEWED BY:	DARYL MCCORMICK	AWTM 21-3261-01		110 KM/H (DERESTRICTED)	SLATER STREET, GOOMALLING	REV 0		
				DAMIEN COPPIN	AWTM 22-10715-02		WORKSITE SPEED:	ROAD AUTHORITY:	SITE SPECIFIC DRAWING		
							40 KM/H	SHIRE OF GOOMALLING	ISSUE: 19/11/19 REV 1		
									FOR THE MOST CURRENT VERSION OF THIS CONTROLLED DOCUMENT, REFER TO THE LGC DATA SERVER		